

BICYCLE SERVICES AROUND ICELAND

Cycling in Iceland

If you are planning an adventurous cycling trip, Iceland is unique in many ways. It is safe to travel here if you are properly prepared and you will find Icelanders both helpful and friendly. You can plan your own trip but there are also a few companies that specialize in guided bike tours.

The weather

Iceland's cool oceanic climate is quite mild for its latitude, thanks to the Gulf Stream. The summer is short and the best time to visit is late May to early September. The average daytime temperature around the coast during May to September is 10-17°C (50-55°F). Average daily sunshine in July and August is 3-6 hours and during the summer months the nights are bright, on clear days you have 24 hours of daylight and even the midnight sun near the Arctic Circle.

However, the weather is extremely changeable and unpredictable so you should always be prepared for the unexpected. You can encounter strong sudden winds and even snow in the middle of summer, even if you stick to the main road, so you should always follow the weather forecast and in all cases carry warm clothing with you. Try to keep your plans flexible so you can follow the wind instead of struggling against it. If you must go against the wind, you might consider cycling in the late evening and in the night (in June and July) as the wind usually calms down in the evening. Benefits of this will also be far less motor traffic on the busier roads and the wonders of experiencing sunset and sunrise, but of course less access to most shops and services.

You can get the weather forecast by telephone +354 902 0606 or just by asking the locals. Icelanders follow the weather forecast almost religiously. At altitudes in the interior highlands the temperatures are of course lower. Check out the weather forecast at the Icelandic Meteorological Office www.ved.is or www.stun.ved.is/ for mobile phones.

The roads

A rather large portion of Iceland's road system is made up of gravel roads, especially those with less traffic. These with some kind of asphalt on the wheels of the Road Administration www.vegagerdin.is/vegakerfingilling where gray and red asphalt, yellow gravel.

The main highway around Iceland, Route 1, circles Iceland in around 1400 kilometers. Once you get away from the South-West part the traffic becomes less but it is fast and the roads get narrower, especially once you get off Route 1. On the gravel roads you may encounter long stretches with potholes, "newboards" or loose sand but for less traffic.

Cyclists are allowed in all terrain except the one under Hvalfjörður fjord. The Road Administration has a website www.vegagerdin.is/engish with maps showing current road conditions including the interior highlands and weather conditions on certain mountain roads etc.

The interior highlands

The mountain track across the interior highlands are usually closed until late May or even as late as July, depending on the road and the weather conditions in spring. The Road Administration has information on mountain roads and when they open in the summer at www.vegagerdin.is.

The highland roads are all rough gravel/dirt roads of various qualities from packed mud to wheelbarrows, loose gravel and even sand which may be impossible to bicycle when it has been dry for some period. Many rivers may be crossed on fords and can become dangerous in main rain and in case of glacier rivers, in some areas. You may therefore have to wait until late night or early morning to cross some glacier rivers during the summer. Mountain bikes with full suspension tires for good tracking and comfort and low gear ratios to help climbing steep hills are recommended.

Accommodation

Various huts can be found in the highlands, and can be found on most detailed maps. They may (quite likely) be full and need to be booked well in advance. In the lowlands, guesthouses and hotels can be found but accommodation is not guaranteed to a tent is recommended as an option. In general travelers are allowed to put up their tents everywhere except in cultivated land, close to residential buildings and especially protected areas. It is still a common courtesy to ask farmers for permission before camping on their land.

Food and drink

Food can only be purchased in towns and some other highway locations. You will therefore have to bring food for several days when you are crossing the highlands. As Iceland is sparsely populated there may be 100 to 200 km between shops even on the Ring road between Myvatn and Siglufjörður and Víðin and Skaffell.

Water can usually be accessed quite easily in the countryside from streams and rivers. However in sand and lava areas water needs to be carried. Never take water from areas where farms or fields are upriver. There you can visit the farmers and get tap water. Water from glacier rivers should only be drunk in emergency and preferably filtered. Usually 1 to 2 liters of water carrying capacity is enough.

Based on information from the Icelandic Mountain Bike Club, visit their website for further info: www.fjallagangur.is/istabba/istabba/index.php?lang=en

Services in The Westfjords

Vestfirðir
Aðalfarir 7 - Ísafjörður
Tel. 454 5713
www.veit.is
Bicycle rental

Ísfljótsþingur Símba
Sofufögla 8 - Ísafjörður
Tel. 660 8027
www.veit.is
Bicycle repair and rental

Craftshop
Austurvægar 2 - Ísafjörður
Tel. 454 2310
www.craft.is
Bicycle shop and repair

Ashofnbúlin
Safhafaga 8 - Ísafjörður
Tel. 454 2245
www.ashofnbuлин.is
Bicycle shop

Vila- og hjólaþingur Kristján
Hafnarstræti 14 - Ísfljótsþingur
Tel. 454 8233
www.veit.is
Bicycle repair and rental

Símbahlíðir
Fjarfargata 5 - Ísfljótsþingur
Tel. 660 9454
www.simbahlidir.is
Bicycle rental

Services in North Iceland

Vilvatnverkandi
Hjúlar Gátasonar
Búland 1 - Hrafnarnest
Tel. 451 2514
www.veit.is
Bicycle repair shop

Forstjóri T. Áróðsson
Safhafaga 66 - Saðmáttelur
Tel. 453 5977, 940 6940
www.veit.is
Bicycle repair and rental

Stórhjólafélagið
Ísfljótsþingur 16 - Akureyri
Tel. 462 1713
Bicycle shop and repair

Sportiver
Gátasonar - Akureyri
Tel. 461 7495
www.sportiver.is
www.facebook.com/Sportiver
Bicycle shop and repair

Stórhjólafélagið
Ísfljótsþingur 16 - Akureyri
Tel. 462 1713
Bicycle shop and repair

Útskipta Alþingi
Gátasonar 22 - Akureyri
Tel. 461 7495
www.veit.is
www.facebook.com/utskipta
Bicycle shop and repair

Vilvatnverkandi
Hjúlar Gátasonar
Búland 1 - Hrafnarnest
Tel. 451 2514
www.veit.is
Bicycle repair shop

Héla og Bláa
Reykjavík - Reykjavík
Tel. 660 8946
www.veit.is
Bicycle repair and rental

Wölundur Verndarhúsin
Tjallafjall í Miðvallahöndum
Ca. 50 km east of Reykjavík
Tel. 471 1838
www.veit.is
Bicycle repair and rental

Wölundur Verndarhúsin
Tjallafjall í Miðvallahöndum
Ca. 50 km east of Reykjavík
Tel. 471 1838
www.veit.is
Bicycle repair and rental

Services in East Iceland

Stettin Músi
Sigrýggsson
Garði 1 - Kópavágur
Ca. 14 km west of Akureyri
Tel. 462 8484
www.veit.is
Bicycle repair and rental

Wenkin Skógar
Dyrskógar 4 - Egilstaðir
Tel. 471 1293
Bicycle shop and repair

Útskipta Alþingi
Kappavangi 4 - Egilstaðir
Tel. 471 2525
www.veit.is
www.egilsporn.is
Bicycle shop and repair

Wenkin Skógar
Dyrskógar 4 - Egilstaðir
Tel. 471 1293
Bicycle shop and repair

Wenkin Skógar
Dyrskógar 4 - Egilstaðir
Tel. 471 1293
Bicycle shop and repair

Ísland-Tour
Seyðisfjörður
www.islandtour.com
Bicycle rental, summer only

Síðhjólin
Fjarfargata 1 - Seyðisfjörður
Tel. 860 8122, 472 1300
www.veit.is
Bicycle repair

Alþingisráðið Ána Björnsson
Martaala 6 - Neikostapítappar
Tel. 860 6826
www.veit.is
Bicycle repair

Alþingisráðið
Sofufögla 11 - Neikostapítappar
væri 860 6878
www.veit.is
Bicycle shop and repair

Sandfell
Mólkúli - Djúgvægar
Tel. 894 8284, 891 9640
www.veit.is
Bicycle repair

Þjórningur
Höfnvægar 1 - Höfn
Tel. 611 1221
www.veit.is
Bicycle repair

Alþingisráðið
Sofufögla 11 - Neikostapítappar
væri 860 6878
www.veit.is
Bicycle repair and rental

Services in West Iceland

Gullmálar 8, Bjartanarson
Garðafell 4 - Sýklingahólar
Tel. 438 1475, 867 9884
www.veit.is
Bicycle repair and rental

Austri Bicycle repair shop
Menlopört 2 - Akranes
Tel. 431 1533
www.veit.is
Bicycle repair and rental

Krakkar og Hjól
Skarlagata 17 - Akureyri
Tel. 445 5200
www.krakkaroghjol.com
Bicycle shop and repair

Services in The Capital Area

Bicycle Company
Barkarásar 7 - Reykjavík
Tel. 590 8530
www.bikecompany.is
Bicycle rental and bicycle loans

Reykjavík Bicycle Tours
and Bicycle Rental
Alþingisgata 7 - Reykjavík
Tel. 590 8530
www.bikecompany.is
Bicycle rental and bicycle loans

Borgartúni
Hornfjörður 10 - Reykjavík
Tel. 551 9453
www.borgartuni.is
Bicycle rental, bicycle shop and repair

Krío Hjól
Grandarásar 7 - Reykjavík
Tel. 524 0541
www.veit.is
Bicycle shop and repair

TÖI
Sæfjörðvegur 22 - Reykjavík
Tel. 571 8211
www.veit.is
Bicycle shop and repair

Reykjavíkverksmiðjan
Sundabraut 56a - Reykjavík
Tel. 557 7777, 591 2901
www.veit.is
Bicycle shop and accessories

Gilgöngu
Túndur 1 - Reykjavík
Tel. 580 8326
www.gilgongu.is
Bicycle shop and repair

Laufvegisgjafi
Skjalafell 23 - Reykjavík
Tel. 524 6490
www.laufvegisgjafi.is
Bicycle shop with all bikes and accessories

Óttapört - Fimlandar
Hafnarvík 4 - Reykjavík
Tel. 471 1293
Bicycle shop and repair

Hjólafermi á Álmannalögum
Laugavegur 17 - Reykjavík
Tel. 864 2775
www.hjolafermi.is
Cycling promotion center

Ósmán
Faseln 8 - Reykjavík
Tel. 580 8980
www.veit.is
Bicycle shop and repair

Hjólafélagið
Garnavegur 10 - Reykjavík
Tel. 582 4527
www.hjolafermi.is
Bicycle repair shop and e-bike gear

Hjólaþingur Símba
Vagnfrónu 4 - Reykjavík
Tel. 611 0490
www.veit.is
Bicycle repair shop

Eventur
Skarlagata 6 - Reykjavík
Tel. 520 4910
www.eventur.is
Bicycle shop and repair

G.U.P. Hjólubúlin
Faseln 7 - Reykjavík
Tel. 520 0200
www.gup.is
Bicycle shop and accessories

Martíð
Arnald 4 - Reykjavík
Tel. 517 4600
www.martid.is
Bicycle shop and repair

Islandic adventures
Danabergarvegur 8 - Mútlakjörður
Tel. 524 5222
www.islandicadventures.com
Lastminute mountain biking tours

Hjólaþingur
Fjarfargata 5 - Reykjavík
Tel. 660 9454
www.hjolafermi.is
Bicycle and accessories

Hjólaþingur
Austurvægar 4 - Kópavágur
Tel. 587 9800, 892 2512
www.hjolafermi.is
Bicycle repair shop

Hjólaþingur
Skriftavægar 9 - Kópavágur
Tel. 551 0331
www.hjolafermi.is
Bicycle shop and repair

Hjólaþingur
Skriftavægar 30 - Kópavágur
Tel. 577 6400
www.hjolafermi.is
Bicycle shop and repair

WELL Sembrönd
Tel. 581 1100
www.well.is
Bicycle shop

Wólur - Skarlagata 17
Skarlagata 17 - Reykjavík
Tel. 553 5055
www.wolur.com
Bicycle rental

Services in South Iceland

Bláa Lágungin
Austurvægar 11 - Seltisnes
Tel. 481 4300, 664 1002
www.blalagungin.is
Bicycle repair and rental

Islandic Activities
Mörðubraut 3-6 - Sveigafellur
Tel. 777 6262
www.islandicactivities.com
Bicycle rental and guided tours

Bláa Lágungin
Skriftavægar 9 - Kópavágur
Tel. 551 0331
www.blalagungin.is
Bicycle shop and repair

Alþingi
Austurvægar 11 - Seltisnes
Tel. 481 4300, 664 1002
www.althingi.com
Bicycle shop and repair

Alþingi
Austurvægar 11 - Seltisnes
Tel. 481 4300, 664 1002
www.althingi.com
Bicycle shop and repair

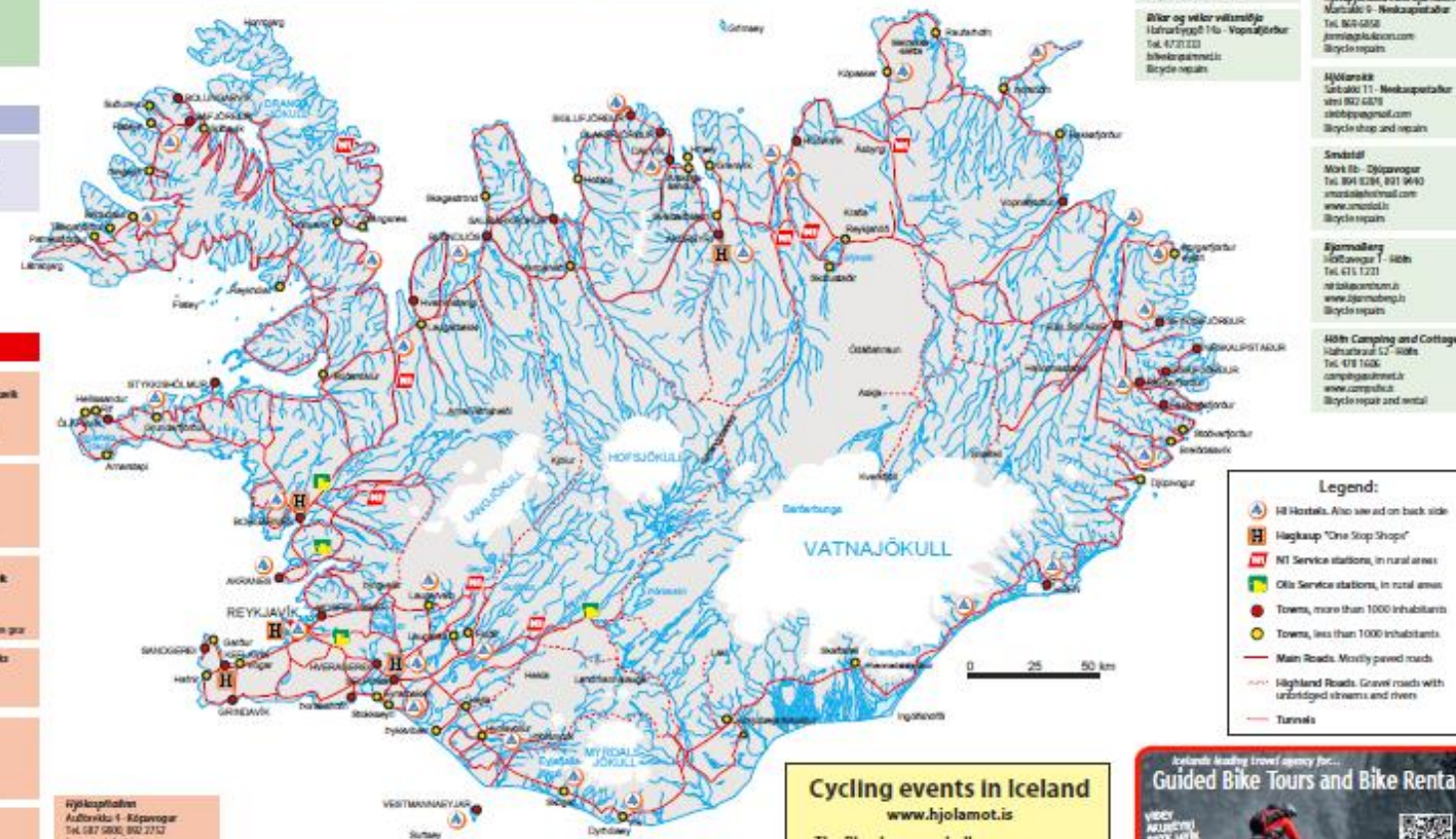
Alþingi
Austurvægar 11 - Seltisnes
Tel. 481 4300, 664 1002
www.althingi.com
Bicycle shop and repair

Cycling events in Iceland

www.hjolamot.is

- **The Blue Lagoon challenge**
From Hafnarfjörður to the Blue Lagoon, 65 km.
www.bluelagoonchallenge.com
- **Jökullmílan**
165 km or less around Skarlabrekkur.
www.hjolamot.is - www.jokullmilan.is
- **WOW Cyclothon**
Cycling with a team around Iceland within 72 hours.
www.wowcyclothon.com

- **Tour de Hvolsvöllur**
110 km from Reykjavík to Hvolsvöllur.
www.tourdehvolsvollur.is
- **Tour de Ormurinn**
65 km cycling around Lagarinn, starting in Hlíðarskotabakkagata.
www.facebook.com/TourdeOrmurinn
- **Become a superhero in Iceland**
by cross-country skiing, swimming, running and cycling
www.landvaettur.is



Guided Bike Tours and Bike Rental

Visit ALÞINGISRÁÐIÐ ÁNA BJÖRNSSON, REYKJAVÍK, ISLANDIA

Besta höfuðgættu 2 | 101 Reykjavík
www.blalagungin.is | www.wowcyclothon.com | +354 894 4820

Reykjavík Bike Tours & Bicycle Rental

City Tour a Day Tours
Bicycle Rental
Signpost Tours